



# MONTHLY MEMBERSHIP PROGRESS REPORT

District 322C1

Results as of: 02/28/2019

GMT: SWADESH RANJAN SAHA

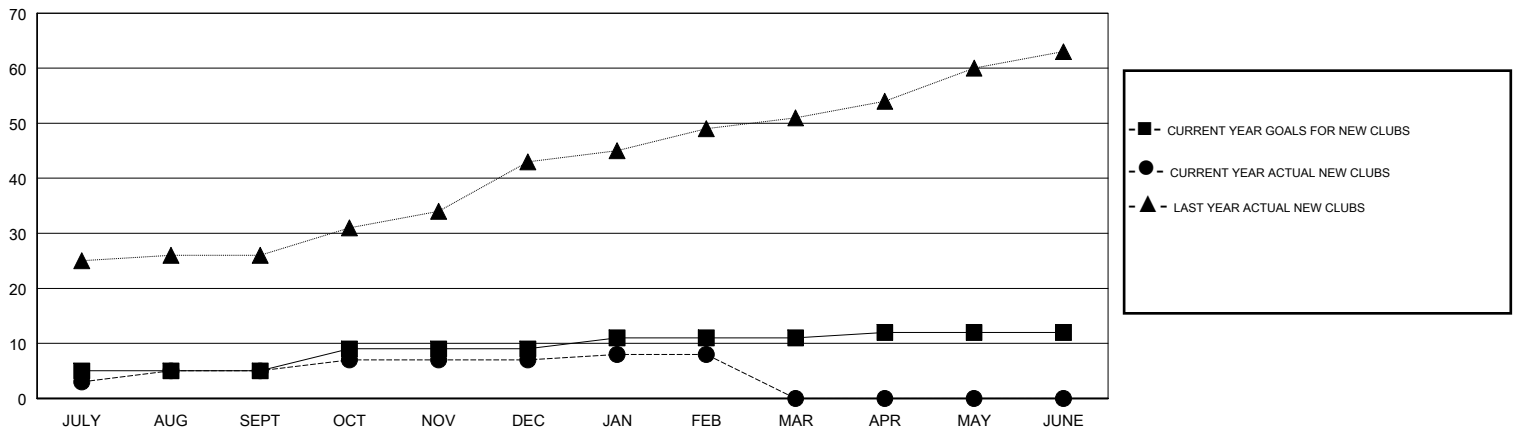
LOCATION INDIA

GMT CA

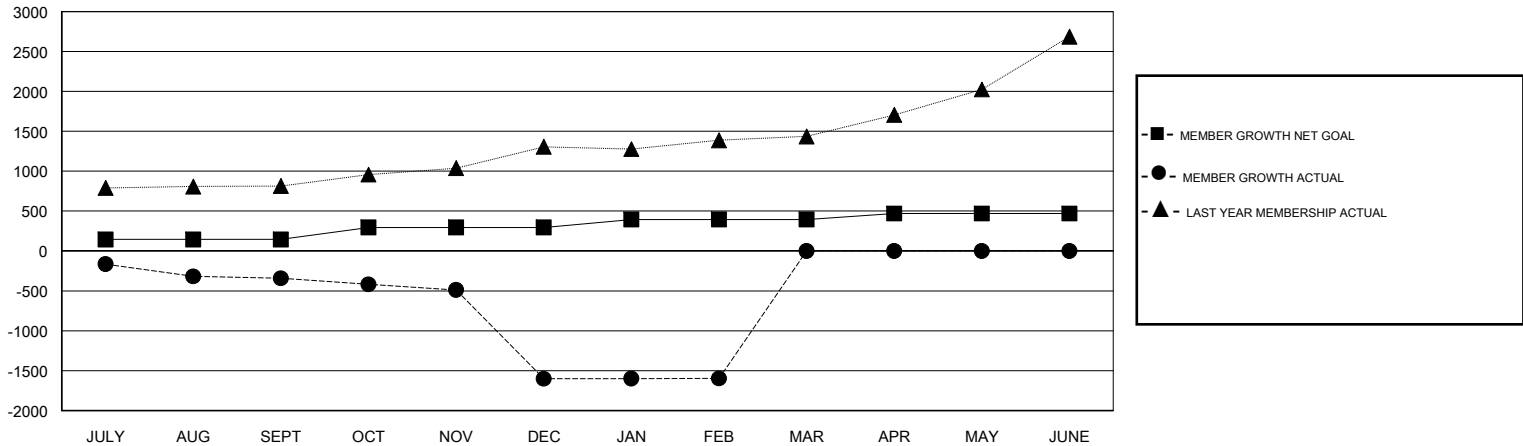
Clubs			
RESULTS FOR 2018-2019			
QUARTER	NEW CLUB GOAL	NEW CLUBS	DROPPED CLUBS
JULY/AUG/SEPT	5	5	3
OCT/NOV/DEC	4	2	24
JAN/FEB/MAR	2	1	3
APR/MAY/JUNE	1	0	0

Members			
RESULTS FOR 2018-2019			
QUARTER	MEMBER GROWTH NET GOAL	MEMBER GROWTH ACTUAL	DROPPED MEMBERS ACTUAL (including transfers)
JULY/AUG/SEPT	145	172	494
OCT/NOV/DEC	150	106	1,355
JAN/FEB/MAR	100	57	41
APR/MAY/JUNE	75	0	0

GOALS AND ACTUAL NEW CLUBS CUMULATIVE



GOALS AND ACTUAL MEMBERS CUMULATIVE



DROPPED CLUBS: 30

48 CLUBS OF 171 ADDED 1 OR MORE NEW MEMBERS

GENDER DISTRIBUTION	
MALE	3,200 (74.75%)
FEMALE	1,081 (25.25%)
Women Percentage Fiscal Year Goal: 28%	

DROPPED MEMBERS	
DECEASED	8
CLUB CANCELLED	1,056
OTHER	826
<b>TOTAL</b>	<b>1,890</b>

[CLICK HERE FOR CUMULATIVE MEMBERSHIP DATA](#)

TOTAL FAMILY UNIT MEMBERS	2,206
FAMILY MEMBERS PAYING HALF DUES	1,285